



## Fall 2009/2010 Southdale Community Newsletter

Southdale Community Centre  
254 Lakewood Blvd, Winnipeg MB R2J 3A2  
Ph: 257-6171 Fax: 254-3128

---

### SOUTHDALE EXPANSION PHASE 1

WATCH FOR EXCITING NEWS  
COMING IN THE NEAR FUTURE

Thank you to The Province of Manitoba  
And The Government of Canada for the  
Generous Donation of \$4 Million Dollars

**Fall Registration Information on inside page**

[WWW.SOUTHDALE.MB.CA](http://WWW.SOUTHDALE.MB.CA)



## FALL 2009 REGISTRATION

### In Person Registration

Thursday, September 3rd— 6:00 p.m.-8:30 p.m.

Tuesday, September 8th— 6:00 p.m.-8:30 p.m.

Thursday, September 10— 6:00 p.m.-8:30 p.m.

### On-Line Registration

On-line registration can take place anytime, day or night starting on **Monday August 31st.**

Go to **www.southdale.mb.ca** click on the login button and follow the instructions to register your family information. Then you can register for the sports or programs of your choice, plus activity card.

Payment is with **Visa or MasterCard only.**

### Late fees

A late fee of **\$50.00** will be applied to **all registrations after September 13th... NO EXCEPTIONS**

### Activity Cards

Activity Cards are required to register for any sport or program over 4 weeks. The **cost is \$60.00** per family from **September 1st, 2009-August 31st, 2010. Activity Cards can be purchased during in person registration**

### Refund Policy

A **\$10.00 administration fee applies to all refund requests** other than program cancellation

**NO EXCEPTIONS.**

Upon proper notification refunds will be given but will be prorated... **No refund after 3 classes.**



## PRESIDENT'S MESSAGE

While everyone is enjoying the dog days of summer, activity at Southdale is in full maintenance mode. The building is getting a face lift – all the corners are cleaned, walls are painted, benches stained, ice removed and replaced - all in preparation for the start up of fall programming. Thanks to Bob, Ed, Steven, Kurt, and the Green Team members (Rick, Ryan and Courtney) for all their hard work in getting everything ready.

There have been several changes in staff over the summer. Kathryn Stephen and Travis Gibson have both left Southdale. We thank them for the years they spent at Southdale and their contributions to the Club. Good luck to both in their new endeavors.

Welcome to Dyani Carruthers, our new office administrator who joined us in June. Drop into the office and meet Dyani.

Effective September 14, 2009, Tom Cardinal will be taking position of General Manager. Tom is coming to us from River Heights Community Centre, where he has been the general manager for 15 years. We are excited to have Tom come to Southdale and look forward to seeing him at the club.

Last, but surely not least, our Expansion received \$2 Million from the Province of Manitoba and \$2 Million from the Government of Canada. Our thanks to Premier Doer and Erin Selby who worked so hard to make our DREAM a reality; thanks to Shelly Glover for her support and encouragement. We also thank Councillor Dan Vandal and Mayor Sam Katz who have supported this expansion at City Council. There will be an information table on the Expansion set up at fall registration - September 3<sup>rd</sup>, 8<sup>th</sup>, and 10<sup>th</sup>, from 6:00 p.m. to 8:30 p.m. Please drop by, see the plans and give us your thoughts.

Wendy Memryk



### Wednesday Night Bingo at Southdale Community Centre

254-Lakewood

(Highway #1 East to Zellers, turn right)

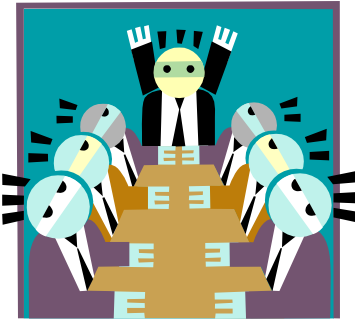
Doors open at **6:00 p.m.** Early Birds **7:00 p.m.**

Regular Bingo **7:30 p.m.**

Ask about our Frequent Players Card

Check Out Our **New Bonanza Bingo**

**“Super ‘3’ Bonanza”**



**SOUTHDALE COMMUNITY CENTRE**  
**2009/2010 BOARD OF DIRECTORS AND STAFF**

**EXECUTIVE:**

|                                  |                |
|----------------------------------|----------------|
| President                        | Wendy Memryk   |
| Vice President                   | Gayle Farkas   |
| Secretary                        | Dorothy Ross   |
| Treasurer                        | Jess Leung     |
| Past President                   | Rick Harding   |
| Governance<br>And Accountability | Larry Mitchell |

**STAFF:**

|                   |                           |          |
|-------------------|---------------------------|----------|
| General Manager:  | Tom Cardinal (Sept 14/09) | 257-6120 |
| Facility Manager: | Bob Simpson               | 257-6166 |
| Office Admin:     | Dyani Carruthers          | 257-6150 |

**DIRECTORS:**

|               |                                |
|---------------|--------------------------------|
| Scouting      | Dana Erickson                  |
| Programs      | Louise Harding                 |
| Ringette      | Penny Lesperance / Tara Wallis |
| Baseball      | Taras Stecy                    |
| Softball      | Joe Kravetz                    |
| Indoor Soccer | Kim Gagliardi                  |



**It is Time to Register for Badminton!**  
**2009 – 2010 Winter Developmental Programs**

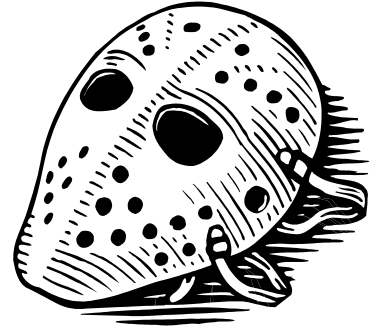
Badminton Manitoba is now taking registrations for our 2009 – 2010 Winter Developmental Program. We are looking for young badminton players interested in improving their skills in one of the **world's most popular sports**.

Programs will be held on Wednesday nights at schools in your area.

For more information and to register visit our website at [www.badminton.mb.ca](http://www.badminton.mb.ca)

**Get active and have loads of fun!**

## HOCKEY



WOW, there have been a lot of changes in hockey in the past few years. The level of volunteering has increased and the hockey program overall has gained.

The hockey program continues to grow in St. Boniface and Southdale specifically. There were over 540 participants registered out of Southdale constituting approximately 63 % of all St. Boniface Minor Hockey participants. When I assumed the position there were 445 players in the program. As a community club, we have a strong volunteer base for the players. This includes coaches, assistants, treasurers, social organizers etc... A heartfelt **Thank You** to all who take the time to make this sport fun for the players and for the families.

One of the keys to hockey in Southdale is the participation of Southdale volunteers with St. Boniface Minor Hockey. They are the governing body of minor hockey in our area. Three years ago there were only 3 Southdale people on the SBMHA Board. We now have 13 people active on the Board.

Welcome to Todd Thornton and Ray Bazinet as the new convenors for the Southdale Hockey Program.

### Recognition

A thank you to all the behind the scene people that allow this sport to be as fun as it can be. These are people who spend countless hours volunteering to allow the growth of a sport that they have had the pleasure of watching and participating.

Games run smoothly when referees and timekeepers attend, thanks to Gerry Gauvin and Joyce Webinger. We do our best to teach the young officials with an extra clinic or taking a hands on approach, thank you Stan Hill, our SBMHA Referee in Chief. Others who have contributed significant amounts of time to a program in addition to the teams their kids are on are Neil Douglas, Mark Romas, Mike Dennehy, Mike Espenell, Royce Manery, Karen Taraschuk, Dave Shalley, Glen Grist, Ken Coughlin and Bob Valcourt.

I strongly believe we are committed to giving the players the opportunity to be challenged at every level. To every parent that wakes the kids (and family) up early for a game or practice, thank you. The players love the roar of the game.

The introduction of the sport to families and players is a major key in why the program keeps going and has the positive reputation it has in the city. If you are interested in coaching at the younger ages, please contact Todd Thornton or Mike Espenell. As well, age convenors for all ages are required. Please contact SBMHA if you are interested.

A final thank you to the families I have actively coached and their kids. I have enjoyed every moment. Finally to Colleen, who allows me to enjoy this pursuit of fun.

Dave Bilyk, Past Hockey Director





## RINGETTE

Here we go again!!! Ringette is fast approaching and it is gearing up to be a fun and exciting year! Ringette in 2008 grew at Southdale and we are predicting another growth for 2009.

The Ring Rage Tournament is set to go! The dates for the tournament this year are November 20<sup>th</sup> to November 29<sup>th</sup>. Due to the growth at our club we have decided that the tournament will run during the day on November 27<sup>th</sup>. The social and social will be held on November 28<sup>th</sup> with the pancake breakfast on the first Saturday, November 21<sup>st</sup>. Just a reminder the to the Ring Rage lovers: let's get more sponsors this year and start saving your jars! We are looking for tournament volunteers please let us know if you can help. We will be starting some discussions in August.

Due to the increase in numbers at our club it has become very difficult to satisfy requests and problems have arose because of it. We are implementing a new policy this year that only NEW players can make a team request, however, we are adjusting our registration forms to include schools and previous teams to help with team formations.

With a new facility in the future at Southdale, Ringette is excited to be a part of this excitement. Let's all work together to help make it happen!!

Thanks to all our volunteers and coaches from 2008; we look forward to working with you again in 2009!

Penny Lesperance and Tara Wallis

Southdale Ringette Co-convenors



### ANNUAL CHRISTMAS CRAFT SALE AT SOUTHDAL COMMUNITY CEN- TRE

**SUNDAY, NOVEMBER 15TH**

**254 LAKEWOOD BLVD.**

**10:00AM—3:00PM**

**ADMISSION IS \$2**

## FEMALE HOCKEY



We hope that you and your family consider the Female Hockey Program for your daughter's sport activity. We would be happy to answer all of your questions regarding the Female Hockey Program at any time.

Our Female Hockey Program believes that hockey is for life. There are opportunities for higher-level competitive hockey and for those players just looking for an activity.

Our player base grows each year. It is never too late to start playing female hockey.

We continually have transfers from boys hockey and ringette.

Each year, our players receive support through several initiatives made possible by past committee volunteers and the Stars Cup for Life tournament. In past years, we have supported team development and clothing/ equipment bags. In addition, we are proud that our teams have the sharpest-looking jerseys around.

As an added incentive, first time players will receive a gift bag during registration.

Female teams are formed according to Winnipeg Minor Hockey Association rules based upon the number of players registered at each age division.

Female hockey is categorized into the following:

- Atom: 8-10 yrs
- Peewee: 11-12 yrs
- Bantam: 13-14 yrs
- Midget: 15-17 yrs

Unfortunately, we do not have a novice program for those female players 7 years of age and under. One option is to start playing co-ed hockey (boys) and to transfer to female hockey at age 8.

For registration information on female hockey or contact information, visit [www.starsfemalehockey.ca](http://www.starsfemalehockey.ca).

Patrick Martin

St. Boniface Female Hockey





## SOFTBALL

### Fall Softball Report

2009 was another very successful year for the Southdale softball program. This year we had 16 teams registered with Softball Manitoba. Southdale won 4 of the 8 competitive divisions where we fielded teams in the Boni-Vital League.

For provincial championships we had 8 Southdale teams qualify. Congratulations to the Squirt B team which won Gold, the Mite B B team who won Silver and the Southdale Pee Wee B and Pee Wee C#1 teams who won Bronze. We continue to be a force at the provincial level with 6 Gold, 4 Silver and 3 Bronze in the last 4 years.

This year the weather cooperated and we were able to run our annual Southdale Softball tournament. The tournament ran from June 5-7 and hosted 51 teams from across Manitoba. This tournament continues to be well received and has become one of the premier softball tournaments for the B and C levels.

What continues to be a strong point with the Southdale Softball program is the vast number of volunteers who devote their time and put in great effort to ensure our seasons are a success. Many people went above and beyond in their efforts to ensure success in the Southdale Softball Tournament, Boni-Vital playoffs and our regular season. The people are too numerous to mention but thanks to all of you for your continued support.

I would also like to thank all the coaches who are giving of their time and providing Southdale with strong leadership among the young athletes. This is in no doubt another factor in our success.

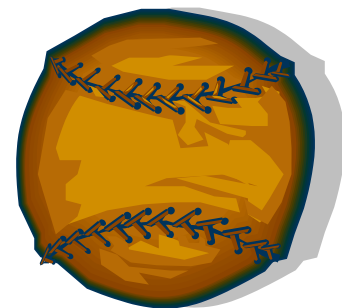
At the final conclusion of this season I will be stepping down as convener. It has been my pleasure to work with all those involved in helping make our softball program one of the best. During the past 4 years I have been involved we have resurrected our annual softball tournament, continued our commitment to player development, continually increased our registration and have become a major force province wide. All these could not have been done without the dedicated assistance of many individuals.

The convener position will be vacant come September 30 and someone will be needed to step into the role to ensure this strong program continues. If you would like any information on this position please contact me.

I will continue to be involved in some aspect and hope to see you all next year.

Joe Kravetz

Southdale Softball Convener



## BASEBALL 2009



**Growth in the Southdale area Baseball Program continues** by exceeding last year's record registration. For 2009, Southdale hosted 21 teams including seven Rallycap (4-7) teams, four Rookie (8-9) teams, two Mosquito A (10-11) teams, one Mosquito AA team, one Peewee A (12-13) team, one Peewee AA team, one Bantam A (14-15) team, one Bantam AA team, two Midget A (16-18) teams, and one Junior AA (19-22) team. Southdale also had players represented on the Bonivital Blacksox Peewee, Bantam, and Midget AAA teams, as well as the Bonivital Midget AA team.

**Girls in Baseball:** Baseball Manitoba has initiated a new girl's baseball program with the theme "You wish you could throw like a girl". In May of 2009, Baseball Manitoba held an extremely successful "Girls Baseball Day" that was televised on the National news. Southdale hopes to increase the number of girls playing baseball over the years to come.

**Hit-Run-Throw competition:** Noah Dupas came in 1<sup>st</sup> in the Bonivital area for Rookie aged players. Steven Wiebe and Colin Gisiger came in 1<sup>st</sup> and 2<sup>nd</sup> respectively for the Peewee aged group.

The three Southdale boys will represent Bonivital at the Can West Global Park provincial HRT competition in Aug of 2009.

**The following two teams qualified in the Bonivital League playoffs to advance to the City Championships:**

1. Mosquito A team (10-11) under Coach Armand Bernard.

Peewee AA team (12-13) under Coach Marcel Gisiger.

**Southdale Hosted the 2009 Bantam A City Championship.**

Over the July 6th to 9th period, five Winnipeg teams took part in a Round Robin, with St Andrews coming out as the champion, and Winakwa taking second place.

I truly appreciate the efforts put forth by all the Southdale Coaches this year in providing the players an exciting season of baseball, and at the same time consciously improving on the player's skill levels in preparation for the years to come. I would also like to thank our volunteers who have stepped up to convene various age groups, work with equipment distribution, and provide field maintenance. And finally, I would like to thank all the parents who volunteered their time to manage the teams, assistant coach, and score keep.

I am optimistic that the sport of baseball will continue to grow in the Southdale area, with the success of programs such as:

1. The new baseball initiation Rallycap program, where boys and girls develop basic baseball skills while having fun!
2. The focus on beginners program; "Never played baseball before? No problem!" that has increased the number of players of all ages whom had not played baseball before.
3. The winter indoor baseball skills development programs.

And the promotion of the new girls program.

Taras Stecy

Southdale Baseball Convener



# Imagine...

being on a journey of self-discovery.

be truly amazing



Call to schedule a **FREE** placement test today!

Great things are possible when your child has the skills to succeed on his own. Kumon Math and Reading uses a proven method to nurture achievement and help your child perform beyond expectations.

**KUMON**  
MATH. READING. SUCCESS.  
800-ABC-MATH  
www.kumon.com  
©2009 Kumon North America, Inc.

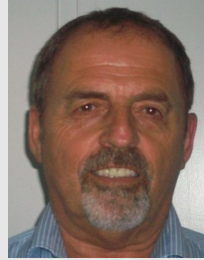
## KUMON Southdale

### 204-771-7241

Southdale Community Centre  
254 Lakewood Blvd



## Focus Hyundai



1066 Nairn Ave.

Winnipeg, MB  
R2L 0Y4

663-3814

As a long time member of the community I would like to welcome you to come visit at Focus Hyundai for a coffee.

We offer financing as low as 0% and rebates for 2009 and 2010 vehicles.

For an appointment call 633-3814

Wayne Rajotte

Focus Hyundai

# ERIN SELBY

MLA / DÉPUTÉE SOUTHDALE

253-3918 • southdalemla@erinselby.ca



# Community Building



## BASKETBALL

### *Thinking of trying a new sport?*

Why not try basketball? Over the last number of years the basketball program in Southdale has continued to grow. We had 99 children register for Spring League, a new record! Basketball is open to boys and girls ages 5-18 (born 2002 - 1991). Southdale teams are entered into the Winnipeg Minor Basketball Association League and play against teams from other community centres across the city. Games are played once per week from mid-October to mid-March (usually Saturdays for children 5-11 and Sundays for children 12+). Teams practice once per week in a school gym located in our community. Practice times and days will be determined after teams have been formed.

Sign up and join the fun!

Cynthia Bauer (cynthia.bauer@mts.net)

Southdale Basketball Convenor

**Congratulations to Southdale Basketball coach of the year for 2008/2009 Rosario Gigliotti!**

**Congratulations to:**

**U15 Boys Blue Division Silver Medalists Fall/Winter 2008/2009, Coach Bauer & Beckett**

**U10 Boys Green Division Bronze Medalists Fall/Winter 2008/2009, Coach Purpur**

**U11 Boys Southeast Bronze Medalists Spring 2009, Coach Daley**

### **Open the Door to Scouting**



**SCOUTING IS A FAMILY AFFAIR** that your whole family can enjoy. Membership is fully co-educational and divided into youth sections for every age group. Parents can also get involved as Scouters or helpers.

**BEAVERS 5-7 years old** (Monday 6:15 to 7:15 at Shamrock School)  
Encouraging creativity, Learning to share and play together, featuring a love of nature

**CUBS 8-10 years old** (Wednesday 6:45 to 8:30 at Niakwa Place School)  
Learning by doing, Developing teamwork, Camping, games and crafts

**SCOUTS 11-14 years old** (Wednesday 7:00 to 9:00 at Ecole Van Belleghem)  
Emphasis on outdoor adventure activities, Personal development through extensive badge program

**VENTURERS and ROVERS** (Wednesday 7:00 to 9:00 at various locations)  
For teenagers and young adults

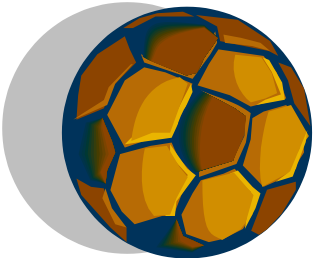
#### **FOR MORE INFORMATION:**

Visit Scouts Canada website at [www.scouts.ca](http://www.scouts.ca)

Contact 1<sup>ST</sup> Southdale Group Commissioner – Michelle Crick (256-9880), [thecricks@mts.net](mailto:thecricks@mts.net)

Learn more at the Southdale Community Club 2007 Fall Registration





## MINI SOCCER

**The Southdale mini-soccer program** is the home of 640 participants aged 4-8, an increase of 120 players from the 2008 season. The program continues to grow and provide players with an opportunity to have fun, meet new friends, participate and even pick up a few soccer skills along the way.

This year TimBit Soccer was introduced providing the community centre with player jerseys and balls, participants also received a few “perks” throughout the season.

As well, this year was the 1<sup>st</sup> Annual “Near-to-Year-End Extravaganza” weekend in which 56 teams participated in 74 games!!! Thank you to all those that volunteered at the BBQ and “other duties as required” to make this event such a success. Your help and participation is priceless. The weather couldn’t have been better, and from the smiles on everyone’s faces this event is sure to return next season! Thank you to Miller’s Meats, Natural Bakery, Vermillion Safeway, Alpine Safeway and Tim Horton’s.

I hope that all the mini players, parents, and coaches had a fun filled season. I look forward to the return of these enthusiastic players in 2010. Thanks to the 116 volunteer coaches, I hope you will consider returning to develop and grow our players and the sport of soccer in our community.

Our program would not be as strong as it is today without the involvement of our parents, coaches, players and support of the community. Thanks to each and every family that make soccer a long-term success in our neighborhood.

If you have any questions, concerns or suggestions please contact me.

Kim Teffaine

Mini Soccer Convenor

[sdminisoccer@mts.net](mailto:sdminisoccer@mts.net)



# SWEAT SHACK

Bring in this coupon to receive 10% off ANY regular priced item in the ENTIRE STORE!

3 St. Anne’s Road

254-2255

[www.sweatshack.com](http://www.sweatshack.com)

# SOUTHDALE SKATE SHARPENING

In The  
Southdale Arena  
254 Lakewood Blvd.

*Doug Carter*

Mon-Fri: 4 p.m. - 10 p.m.  
Sat. & Sun.: 9 a.m. - 6 p.m.

Ph: 257-6100  
Cel: 795-0552

## FITNESS AND DANCE PROGRAMS



### FUSION AEROBICS – by BODY GLOW FITNESS

Need that class that will motivate you to return every single time? This is it! With a well planned out hour fitness class to invigorate you, energize you and get you in total body shape! Classes include components of, Step, Zumba, Pilates and yoga booty ballet! Taebo and weights for stretch, strength and body sculpting are fused with an emphasis on the newest piece of equipment in the fitness industry GLIDERS. Join us today – all welcome! Make it a priority this year to get into shape and **STAY THERE WITH US! RESULTS ARE GUARANTEED AND THE MUSIC IS THE BEST IN TOWN.**

**Instructor: Regina Angeleau, Manitoba Fitness Council Accredited Trainer September 15, 2009 – December 3, 2009**

**Tues & Thurs 6:45 – 7:45 pm**

**1x per week \$50.00**

**2 x per week \$90.00**

### Shall We Dance – Social Dance Classes

Have you ever wanted to partner dance swing, jive, cha cha cha or rumba, salsa but couldn't find the right class or setting? This is the class for you! We offer 4 week classes at a time of one individual dance form with attention to smaller class sizes. Dance for fun, fitness and enjoyment is our motto. You'll fall in love with this popular up and coming form of fitness for all levels and you'll never have to sit out those tunes again. Make it a date night and register now.



**Instructor: Regina Angeleau, A.R.C.T., member of M.R.M.T.A.**

**Register with Instructor: telephone 253-5855**

**Sundays – 6:30 – 7:30**

**October 4, 11, 18, 25**



## Good n' Natural Weight Loss

**“Helping individuals & families regain optimum health, one person at a time.”**

Obesity  
Overweight  
Cardio disease  
Insulin Resistance  
Respiratory Problems  
Skin Conditions  
Diabetes  
Cellulite

**1 on 1  
Coaching  
with Steve**

Lose 3-7 lbs/week  
Vibrant Skin  
Self Worth +  
Wellness  
Vitality  
Energy +  
Confidence  
Clothes fit again

**Kas Sky Wholistic Health Care Centre  
561 St Annes Road, Winnipeg, MB. R2M 3G5 204-415-1308**



## 2009 SOUTHDALE FAMILY CARNIVAL

Family Carnival a New Name at Southdale. The carnival this year was a good success for Southdale, even though the weather man did not cooperate fully. From this year on the Carnival will be geared towards FAMILY. At Southdale Community Centre we are one big FAMILY. The Carnival was started many years ago and one FAMILY in Southdale spent many years organizing this event. The CONSTANT FAMILY, showed how the Family spirit goes along way. Thank You to them for showing us the spirit, and being a huge part of the Southdale Family.

We hope that you all enjoyed the Games of Mini-Soccer, Softball and Baseball, along with all the other activities that took place during the weekend. We hope that next year the FAMILY CARNIVAL will be an even bigger event. We hope to have a Carnival Committee in place for this task, as there are many volunteer hours needed to put on this kind of event at Southdale. If you would like to become part of this Committee please contact Gayle Farkas or Louise Harding.

We would like to Thank the following for there participation in this event.

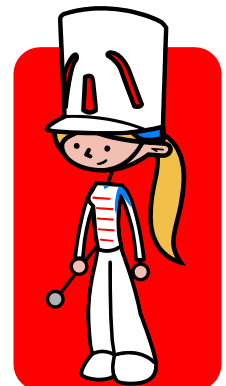
Kim Teffaine – Mini Soccer, Joe Kravetz – Softball, Taras Stecy – Baseball , Erin Selby, Shelly Glover, Dan Vandale, Royal Bank Southdale Staff for the volunteers for the BBQ and Pancake Breakfast, Arch Angel Fireworks for the excellent show Saturday Night, The City of Winnipeg Police Service for keeping things under control on the Midway, Select Shows for the great Midway Rides.

The following Business's donated to the Silent Auction, please Support them for Supporting Us

|                       |                       |                            |
|-----------------------|-----------------------|----------------------------|
| Mississippi Jacks     | Boston Pizza          | Zep                        |
| Young Nails           | Fountain Tire         | 4 Seasons Chinese          |
| Atlantic Pizza        | Superstore            | Giant Tiger                |
| Avon – Kim Leroy      | Pizza Hut             | Southdale Family Rest.     |
| Macyk's Florist       | Sobey's               | Southdale Skate Sharpen    |
| Tamarac Equipment     | Great Finds Boutique  | Nemeth Jewellers           |
| Old Dutch             | Royal Canadian Mint   | Party Lite – Cheryl Larsen |
| Royal Bank Southdale  | Cambrian Credit Union | Wawanesa Insurance         |
| Prairie HVAC          | CIBC Southdale        | Sport Manitoba             |
| MTS Connect Southdale | Keystone Ford         | Boston Pizza               |

Southdale Community Centre

Spring Carnival Organizers



## SOUTHDALE COMMUNITY CENTRE HAS ADVERTISING OPPORTUNITIES

AVAILABLE:

NEWSLETTER

RINK BOARDS

ARENA BOARDS

WEBSITE

PLEASE CONTACT DYANI @ 257-6150  
IF YOU ARE INTERESTED IN ADVERTISING

### Southdale Community Centre

#### Hall and Room Rental Information

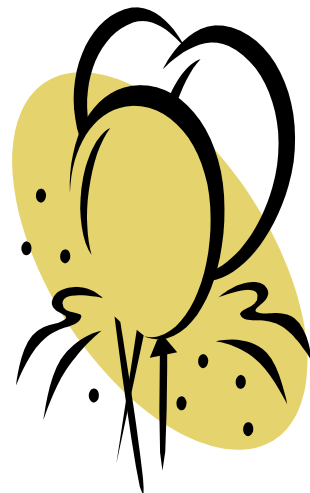
**Multi-Purpose Room:** 90 Person capacity

**Meeting Room:** 50 Person Capacity

**Social Hall:** 265 Person Capacity—\$900.00 + GST OR 390 Person Capacity—\$1380.00 + GST

**10% Discount on Friday Social Hall Bookings**

For any information or to book any room for your special event please call:



SOUTHDALE COMMUNITY  
CENTRE

A FAMILY WORKING  
AND PLAYING TOGETHER

# Southdale Hairstylists

**A Family Owned Salon**  
*Serving your Community for almost 40 years*

*Conveniently Located At*  
5-35 Lakewood Blvd. (Between Zellers & Safeway)  
**☎ 256-8578**

Our Salon Provides Friendly One Stop Beauty Treatment for  
the Whole Family by Experienced

***Hair Stylists ♦ Barbers ♦ Estheticians***

***Manicures / Pedicures / Facials / Waxing / Massage / Tanning***

***Gift Certificates***  
available

***Book your appointment now!***  
***Walk-Ins Welcome***



RBC Royal Bank  
Southdale Square  
111 Vermillion Road  
Winnipeg, MB  
R2J 4A9



Bryan Ritchie  
Branch Manager  
Tel: (204) 988-6587  
bryan.ritchie@rbc.com

**Managing your finances can  
be complex. Our advisors  
can help keep it simple.**

When you're striving to achieve your financial goals, RBC advisors makes all the difference.

To get sound advice for your home financing and investment needs, call us today.

We can meet with you any time, when and where it's most convenient for you!

**CREATE**  
**A FUTURE WITH PEACE OF MIND**



Shelley Skogstad  
Investment & Retirement Planner  
Tel: (204) 988-6613  
shelley.skogstad@rbc.com



Frank Barbaro  
Mobile Mortgage Specialist  
Tel: (204) 799-2374  
frank.barbaro@rbc.com



Terry Robertson  
Financial Planner  
Tel: (204) 988-6263  
terry.robertson@rbc.com